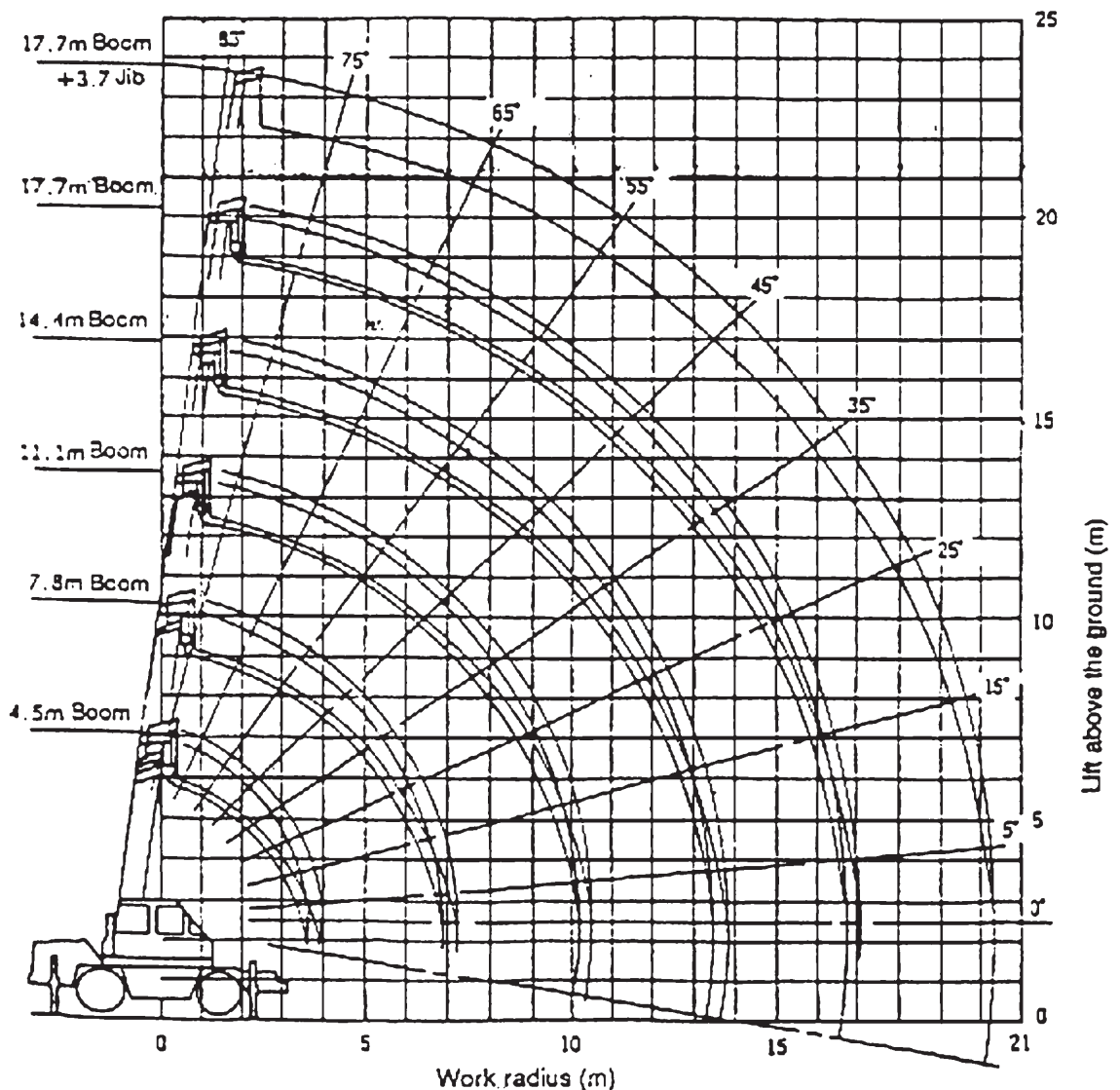


Work radius	Boom length	Boom
	4.5m~7.8m	
3.5m		1.00
4.0m		1.00
4.5m		1.00
5.0m		1.00

The values in this table assume a horizontal, firm ground and without using the outriggers (the weights include the weights of the hook and hanging fixtures). Hanging loads is possible only when the front-area indicator light is on.

■ Work Radius / Lift Graph

The following graph indicates the relationship between the work radius and the lift (height) when the outriggers are fully extended. No boom or jib bending is assumed.



■ Total Load Weight Specifications

- Outriggers fully extended (4.45m), all-around lifting

unit: (ton)

Work radius	Boom					Jib	
	4.5m	7.8m	11.1m	14.4m	17.7m	16.4m	21.4m
1.0m	8.00(4.90)	4.90					
1.5m	8.00(4.90)	4.90	4.90	4.00			
2.0m	8.00(4.90)	4.90	4.90	4.00	4.00	1.40	
2.5m	8.00(4.90)	4.90	4.90	4.00	4.00	1.40	1.40
3.0m	6.10(4.90)	4.90	4.90	4.00	4.00	1.40	1.40
3.5m	5.30(4.90)	4.90	4.90	4.00	4.00	1.40	1.40
4.0m		4.50	4.50	4.00	4.00	1.40	1.40
4.5m		3.95	3.95	3.60	3.60	1.40	1.40
5.0m		3.40	3.40	3.20	3.15	1.40	1.40
5.5m		3.00	3.00	2.90	2.90	1.40	1.40
6.0m		2.70	2.70	2.60	2.60	1.40	1.40
7.0m		2.25(6.8m)	2.20	2.20	2.20	1.40	1.40
8.0m			1.80	1.85	1.90	1.40	1.40
9.0m			1.50	1.55	1.65	1.40	1.25
10.0m			1.25	1.35	1.45	1.40	1.10
11.0m			1.22(10.1m)	1.17	1.28	1.21	1.00
12.0m				1.00	1.10	1.05	0.90
13.0m				0.80	0.90	0.87	0.83
14.0m				0.75(13.4m)	0.75	0.70	0.76
15.0m					0.61	0.60	0.70
16.0m					0.50	0.57(15.3m)	0.65
17.0m					0.46(16.7m)		0.58
18.0m							0.50
19.0m							0.42
20.0m							0.35
21.0m							0.30(20.3m)
Dangerous angle				—	—	—	—

The values here are based on the actual work radius including the boom and jib bending.

The values here assume that the outriggers are fully extended on a horizontal, firm ground; those values above the thick line are based on the strength of the crane, and those below the line are based on the stability of the crane.

"Boom work" indicates main hook work when the jib is put away.

The parentheses () in this table show the values when only the 4.9-ton hook is used.